

TONBRIDGE & MALLING BOROUGH COUNCIL



EXECUTIVE SERVICES

Chief Executive
Damian Roberts

Gibson Building
Gibson Drive
Kings Hill, West Malling
Kent ME19 4LZ
West Malling (01732) 844522

NB - This agenda contains proposals, recommendations and options. These do not represent Council policy or decisions until they have received proper consideration through the full decision making process.

Contact: Democratic Services
committee.services@tmbc.gov.uk

6 September 2024

To: MEMBERS OF THE JOINT TRANSPORTATION BOARD
(Copies to all Members of the Council)

Dear Sir/Madam

Your attendance is requested at a meeting of the Joint Transportation Board to be held in the Council Chamber, Gibson Drive, Kings Hill on Monday, 16th September, 2024 commencing at 7.30 pm.

Members of the Committee are required to attend in person. Other Members may attend in person or participate online via MS Teams.

Information on how to observe the meeting will be published on the Council's website.

Yours faithfully

DAMIAN ROBERTS

Chief Executive

A G E N D A

1. Guidance for the Conduct of Meetings 5 - 8

PART 1 - PUBLIC

2. Apologies for absence 9 - 10

3. Notification of Substitute Members 11 - 12
4. Declarations of interest 13 - 14

Members are reminded of their obligation under the Council's Code of Conduct to disclose any Disclosable Pecuniary Interests and Other Significant Interests in any matter(s) to be considered or being considered at the meeting. These are explained in the Code of Conduct on the Council's website at [Code of conduct for members – Tonbridge and Malling Borough Council \(tmbc.gov.uk\)](https://www.tmbc.gov.uk/code-of-conduct-for-members).

Members in any doubt about such declarations are advised to contact Legal or Democratic Services in advance of the meeting.

5. Minutes 15 - 18

To confirm as a correct record the Notes of the meeting of the Joint Transportation Board held on 17 June 2024.

6. Update on action(s) identified in the last Minutes
 - (1) Minute No. JTB 24/14 – Scope of the Joint Transportation Board and Local/Public Transport.
 - (2) Minute No. JTB 24/18 – Any Other Business (20 mph and 30 mph zones/speed limits in Ightham)

Matters submitted for Information

7. Local Transport Plan 5 19 - 24

The report updates Members on the public consultation on Kent County Council's new Local Transport Plan 5.

8. Highways Forward Works Programme 25 - 44

This report updates Members on the identified schemes approved for construction.

9. Any Other Matters to be Raised

Any matters raised will be for information only and any views, actions, outcomes or recommendations may be addressed out of meeting or reported to the next possible Joint Transportation Board (if appropriate).

- (1) Parking restrictions on Darkhill Road, Ightham
- (2) Phase 15 Parking Review and timeframes

10. Urgent Items 45 - 46

Any other items which the Chairman decides are urgent due to special circumstances and of which notice has been given to the Chief Executive.

Matters for consideration in Private

11. Exclusion of Press and Public

47 - 48

The Chairman to move that the press and public be excluded from the remainder of the meeting during consideration of any items the publication of which would disclose exempt information.

PART 2 - PRIVATE

12. Urgent Items

Any other items which the Chairman decides are urgent due to special circumstances and of which notice has been given to the Chief Executive.

MEMBERSHIP

County Cllr H Rayner (Chair)
Cllr M A Coffin (Vice-Chair)

Cllr A Cope
Cllr S Crisp
Cllr D A S Davis
Cllr F A Hoskins
Cllr A Mehmet
Cllr D Thornevell

County Cllr Mrs T Dean
County Cllr Mrs S Hohler
County Cllr M Hood
County Cllr S Hudson
County Cllr A Kennedy
County Cllr P Stepto

Representatives of Kent Association of Local Councils – Tonbridge and Malling
(non-voting):

- Sue Butterfill – Borough Green PC
- Sarah Barker – Kings Hill PC
- Wendy Palmer – Platt PC

GUIDANCE ON HOW MEETINGS WILL BE CONDUCTED

- (1) Most of the Borough Council meetings are livestreamed, unless there is exempt or confidential business being discussed, giving residents the opportunity to see decision making in action. These can be watched via our YouTube channel. When it is not possible to livestream meetings they are recorded and uploaded as soon as possible:

<https://www.youtube.com/channel/UCPp-IJISNgoF-ugSzxjAPfw/featured>

- (2) There are no fire drills planned during the time a meeting is being held. For the benefit of those in the meeting room, the fire alarm is a long continuous bell and the exits are via the doors used to enter the room. An officer on site will lead any evacuation.
- (3) Should you need this agenda or any of the reports in a different format, or have any other queries concerning the meeting, please contact Democratic Services on committee.services@tmbc.gov.uk in the first instance.

Attendance:

- Members of the Committee are required to attend in person and be present in the meeting room. Only these Members are able to move/ second or amend motions, and vote.
- Other Members of the Council can join via MS Teams and can take part in any discussion and ask questions, when invited to do so by the Chair, but cannot move/ second or amend motions or vote on any matters. Members participating remotely are reminded that this does not count towards their formal committee attendance.
- Occasionally, Members of the Committee are unable to attend in person and may join via MS Teams in the same way as other Members. However, they are unable to move/ second or amend motions or vote on any matters if they are not present in the meeting room. As with other Members joining via MS Teams, this does not count towards their formal committee attendance.
- Officers can participate in person or online.

- Members of the public addressing an Area Planning Committee should attend in person. However, arrangements to participate online can be considered in certain circumstances. Please contact committee.services@tmbc.gov.uk for further information.

Before formal proceedings start there will be a sound check of Members/Officers in the room. This is done as a roll call and confirms attendance of voting Members.

Ground Rules:

The meeting will operate under the following ground rules:

- Members in the Chamber should indicate to speak in the usual way and use the fixed microphones in front of them. These need to be switched on when speaking or comments will not be heard by those participating online. Please switch off microphones when not speaking.
- If there any technical issues the meeting will be adjourned to try and rectify them. If this is not possible there are a number of options that can be taken to enable the meeting to continue. These will be explained if it becomes necessary.

For those Members participating online:

- please request to speak using the 'chat or hand raised function';
- please turn off cameras and microphones when not speaking;
- please do not use the 'chat function' for other matters as comments can be seen by all;
- Members may wish to blur the background on their camera using the facility on Microsoft teams.
- Please avoid distractions and general chat if not addressing the meeting
- Please remember to turn off or silence mobile phones

Voting:

Voting may be undertaken by way of a roll call and each Member should verbally respond For, Against, Abstain. The vote will be noted and announced by the Democratic Services Officer.

Alternatively, votes may be taken by general affirmation if it seems that there is agreement amongst Members. The Chairman will announce the outcome of the vote for those participating and viewing online.

This page is intentionally left blank

Apologies for absence

This page is intentionally left blank

Joint Transportation Board					
	Conservative	Liberal Democratic	Green	Ind. Kent Alliance	Labour
1	Matt Boughton	Tim Bishop	Lee Athwal		
2	Robert Cannon	Garry Bridge	Kath Barton		
3	Des Keers	James Clokey	Robert Oliver		
4	Dennis King	Anita Oakley	Bethan Parry		
5	Kim Tanner	Roger Roud	Stacey Pilgrim		

Updated: July 2024

This page is intentionally left blank

Declarations of interest

This page is intentionally left blank

TONBRIDGE AND MALLING BOROUGH COUNCIL

JOINT TRANSPORTATION BOARD

Monday, 17th June, 2024

Present: County Cllr H Rayner (Chair), Cllr A Cope, Cllr D A S Davis, Cllr F A Hoskins, Cllr A Mehmet, County Cllr Mrs T Dean, County Cllr Mrs S Hohler, County Cllr S Hudson, County Cllr A Kennedy and County Cllr P Stepto.

In attendance: Councillors W E Palmer and M Taylor was also present pursuant to Council Procedure Rue No 15.21.

Mrs S Butterfill, Mr D Hall and Mrs S Barker were also present on behalf of the Kent Association of Local Councils (KALC).

Virtual: Councillors Mrs A S Oakley and M R Rhodes participated via MS Teams in accordance with Council Procedure Rule 15.21.

Apologies for absence were received from Councillors S Crisp, M A Coffin, D Thornewell and County Cllr M Hood.

(Note: Cllr Crisp submitted apologies for in person attendance but listened to the discussion via MS Teams).

PART 1 - PUBLIC

JTB 24/11 NOTIFICATION OF SUBSTITUTE MEMBERS

Notification of substitute members were recorded as set out below:

- Councillor K Tanner substituted for Councillor M Coffin

In accordance with Council Procedure Rules 17.5 to 17.9 this Councillor had the same rights as the ordinary member of the committee for whom they were substituting.

With the approval of the Chair, the Kent Association of Local Councils advised of a substitution in their parish/town representatives for the meeting and Mr D Hall substituted for Cllr W Palmer who attended as a Borough Councillor.

JTB 24/12 DECLARATIONS OF INTEREST

There were no declarations of interest in accordance with the Code of Conduct.

JTB 24/13 MINUTES

RESOLVED: That the Minutes of the meeting of the Joint Transportation Board held on 4 March 2024 be approved as a correct record and signed by the Chairman.

JTB 24/14 SCOPE OF THE JOINT TRANSPORTATION BOARD AND LOCAL/PUBLIC TRANSPORT

Following a meeting of the Chair and Vice Chairs of the Joint Transportation Boards, Members views were sought on whether the scope of the Board should be widened. During discussion, whilst recognising officer resource implications, Members welcomed extending the scope to include public transport and local bus and train travel services.

In order to allow for due consideration to be given, Members requested that the item be included on the agenda for the next meeting for discussion and for a recommendation to the Cabinet Member for Highways and Transport, Kent County Council be agreed.

RESOLVED: That consideration be given to the scope of the Joint Transportation Board at the next meeting.

MATTERS FOR THE COUNTY COUNCIL**JTB 24/15 WOULDHAM EXPERIMENTAL TRAFFIC REGULATION ORDER**

Members received an update to the experimental scheme in Wouldham, where a 'no entry' restriction had been installed at the junction of School Lane and High Street to restrict the number of vehicles travelling southbound on High Street, reduce congestion and reduce pollution from vehicle emissions.

Concerns had been raised by Wouldham Parish Council, County Councillor Kennedy and residents regarding the increase in the amount of traffic using High Street following the construction of Peters Bridge and the Peters Village development.

In response to a public consultation, 62% supported the experimental scheme. Of the objections received, 35% stated that the scheme had too much impact on the adjacent road/communities and businesses. Members noted that this might be due to the length of the diversion route to reach the lower end of the High Street. 16% stated that driving further via the diversion route caused an increase in pollution and was inconvenient.

Wouldham Parish Council had carried out a peak traffic survey in May 2023 which identified an 84% reduction in southbound traffic which could

be approximated to be the level of compliance with the 'no entry' restriction.

During discussion, Members indicated that they would support a gradual reduction in the speed limit on Hill Road on the approach to Medway Green School.

RECOMMENDED: That

- (1) the Experimental Traffic Regulation Order (ETRO) for the 'no entry' point and accompanying 'no right turn restrictions at Scarborough Lane and Church Street be made permanent and include an amendment to exempt cyclists and equestrians from the 'no entry' restriction; and
- (2) the removal of the conversion of School Lane to 'one way' from the scheme be noted.

MATTERS SUBMITTED FOR INFORMATION

JTB 24/16 HIGHWAYS FORWARD WORK PROGRAMME

The report of the Kent County Highways, Transportation and Waste summarised schemes programmed for delivery in 2023/24 and provided an update on Road, Footway and Cycleway Renewal and Preservation Schemes (Appendix A), Drainage Repairs and Improvements (Appendix B), Street Lighting (Appendix C), Transportation and Safety Schemes (Appendix D), Developer Funded Works (Appendix E), Bridge Works (Appendix F), Traffic Systems (Appendix G) and the Combined Members Grant (Appendix H).

Members sought reassurance that signage would be installed leading up to the micro surfacing on Chapman Way leading into Winterfield Lane and notification of changes in bus services. Furthermore, clarification was sought in respect of the current design status for the externally funded scheme for East Street/High Street in Tonbridge and noted that the design would depend on the outcome of a ground penetrating radar survey. An update on the expected conclusion date in respect of the investigations into the feasibility options for drainage repairs and improvements to London Road, Larkfield were sought.

Concern was expressed regarding the recent flooding on Water Lane, West Malling and confirmation was sought on whether the flooding had occurred following the completion of the drainage works. In regard to develop funded works, the lack of directional signage on the newly opened section of Bellingham Way was raised.

JTB 24/17 MAJOR CAPITAL PROGRAMME

The report of the Kent Major Capital Programme Team summarised schemes programmed for implementation in line with Kent County Council's strategic targets with the road network.

Kent County Council provided an update on the major junction upgrade scheme to Coldharbour Roundabout and forthcoming planned works during June as detailed in the supplemental document. Members noted that a comprehensive update would be reported at the next meeting.

JTB 24/18 ANY OTHER BUSINESS

Members noted the request from Parish Councillor David Hall that Kent County Council give consideration to the implementation of a 20mph speed limit in Ightham village centre, the installation of an interactive speed sign and effective signage due to an increase in traffic issues. Further consideration would be given to the request at the next meeting of the Board.

MATTERS FOR CONSIDERATION IN PRIVATE**JTB 24/19 EXCLUSION OF PRESS AND PUBLIC**

There were no items considered in private.

The meeting ended at 8.35 pm

To: Tonbridge and Malling Joint Transportation Board
By: KCC Transport Strategy
Date: 16 September 2024
Subject: Local Transport Plan 5 – Public Consultation
Classification: Information Only

Summary: This report updates Members on the public consultation on Kent County Council's new Local Transport Plan 5. The consultation runs from 17 July to 8 October 2024.

Following consideration of the feedback from the public consultation, the aim is that it will be ready for County Council to vote on its adoption later this year.

1. Introduction

- 1.1 This report provides an update on the new Local Transport Plan 5, which is a statutory plan as set out in the 2000 Transport Act (and as amended by the 2008 Local Transport Act). The Local Transport Plan (LTP) carries weight in the planning system and so is given due regard in decision making. As such, the new plan requires the approval of the full County Council.
- 1.2 Kent's previous LTP (Delivering Growth without Gridlock) was adopted in 2017, with a horizon year of 2031. However, since then, there has been substantial delivery of its proposals as well as significant change in government policy and the challenges Kent faces.
- 1.3 It is therefore time to produce a new LTP that refreshes the County's transport policy and scheme proposals ready for future funding opportunities as they might arise, especially with a new government.

2. Plan development

- 2.1 In September 2021, work commenced on the new plan, such as developing a new ambition for transport in the county, and the outcomes and objectives for the Plan to achieve. Its development has been supported by a KCC cross-party Member Task and Finish group.
- 2.2 In the summer of 2023, the Cabinet Member resolved to consult on an *Emerging* LTP so that members of the public, businesses, and any other interested parties could have their say on the direction of the new Plan.
- 2.3 The key findings from the consultation were that 80% of respondents had some degree of support for the new ambition. The majority also supported the outcomes and objectives. A total of 77% of respondents, including all twelve district councils, stated that climate change and reducing transport's contribution towards carbon emissions was either 'very important' or 'important'.
- 2.4 The ambition consulted on in the *Emerging* LTP has therefore been retained and states:

We want to improve the health, wellbeing, and economic prosperity of lives in Kent by delivering a safe, reliable, efficient and affordable transport network across the county and as an international gateway. We will plan for growth in Kent in a way that enables us to combat climate change and preserve Kent's environment.

We will do this by delivering emission-free travel by getting effective dedicated infrastructure to electrify vehicles, increase public transport use and make walking and cycling attractive. This will be enabled by maintaining our highway network and delivering our Vision Zero road safety strategy. These priorities will ensure our networks are future-proof, resilient and meet user needs.

2.5 Following the consultation on the *Emerging* LTP last year, the Plan's outcomes were amended and are:

1. The condition of our managed highway network is brought up to satisfactory levels, helping to maintain safe and accessible travel and trade.
2. Deliver our Vision Zero road safety strategy through all the work we do.
3. International travel becomes a positive part of Kent's economy, facilitated by the county's transport network, with all the negative effects of international haulage traffic decreased.
4. International rail travel returns to Kent and there are improved rail and public transport connections to international hubs.
5. Deliver resilient transport, future-proofed for growth and innovation, aiming for an infrastructure-first approach to reduce the risk of highways and public transport congestion due to development.
6. Access to Kent's historic and natural environment is enhanced.
7. Road-side air quality improves as decarbonisation of travel accelerates, contributing towards the pursuit of carbon budget targets and net zero in 2050.
8. A growing public transport system supported by dedicated infrastructure to attract increased ridership, helping operators to provide more and invest in better services.
9. Health, air quality, public transport use, congestion, and the prosperity of Kent's high streets and communities will be improved by supporting increasing numbers of people to use a growing network of dedicated walking and cycling routes.
10. The quality of life in Kent is protected from the risk of worsening noise disturbance from aviation.

2.6 After the consultation on the *Emerging* LTP, the proposals that constitute the long-term capital programme were developed and updated and are now the subject of this consultation on the draft full LTP (although there is further opportunity to comment on the ambition, outcomes, objectives etc. as well).

3. Local Transport Plan 5 proposals

3.1 The aim has been to develop a balanced set of proposals that reflect a range of solutions to addressing the challenges Kent faces. These challenges range from the underfunding of our highways assets (resulting in a substantial maintenance backlog), congestion and poor air quality, a growing population, declining financial viability of public transport, and the impacts on Kent arising from having such important international gateways.

- 3.2 The LTP includes proposals that are network-wide (affecting more than one district) and those that are district-specific. There are proposals across the Strategic Road Network (motorways and trunk roads managed by National Highways), the rail network (managed by Network Rail and High Speed 1), the Local Road Network (managed by KCC), the bus network, and the walking and cycling network.
- 3.3 It should be noted that KCC's Bus Service Improvement Plan and Cycling and Walking Infrastructure Plan contain the detailed proposals for those networks. The new Local Transport Plan reflects their planned outcomes and furthers the argument for funding to support their delivery.
- 3.4 The table in Annex 1 lists the strategic proposals across the different transport networks.

4. Funding

- 4.1 The proposals set out in the Plan cannot be funded by the Council alone and so the LTP sets out a range for the anticipated cost of its delivery. Historically, funding has been achieved from competitive bidding for bespoke funding pots. Our track record of success in being awarded funding to deliver LTP proposals puts us in a good position to respond to future funding opportunities, whether they are competitive or not.
- 4.2 It should also be remembered that in many instances the funding to develop the proposals into final schemes will also need to be sought externally, well ahead of any delivery on the ground. This development funding alone can be many millions of pounds for major schemes.

5. Engagement with the district councils

- 5.1 Discussions have taken place at officer level with all districts throughout the development of the Plan. These occurred prior to the 2023 consultation, and more recently on the details of their local transport strategies and infrastructure requirements. All district councils responded to the 2023 consultation on the *Emerging* LTP and their feedback has been considered in those discussions with officers.
- 5.2 The specific proposals for Tonbridge and Malling borough are shown in Annex 2 of this report.

6. Public consultation

- 6.1 The public consultation on the draft full Local Transport Plan 5 commenced on 17 July and ends on 8 October 2024. Alongside the Plan, there is a Strategic Environmental Assessment and an Equalities Impact Assessment, which are also open to comment. There is also a "You Said, We Did" document that demonstrates how the responses to the previous consultation on the *Emerging* LTP have been considered.
- 6.2 There are up to two public exhibition events in each district so that members of the public can drop in and talk to the team about the Plan and its proposals, as well as respond to the consultation directly. Advertising and press releases are being used throughout the consultation to encourage a good response rate. Stakeholders have been informed directly, as have those signed up to the Kent County Council consultation email list.
- 6.3 The consultation is hosted online on the Let's Talk Kent website but all information is available in alternative formats if requested.

7. Conclusion

- 7.1 This report is for Members' information. All interested stakeholders and the public are encouraged to respond to the consultation on Kent's new draft Local Transport Plan at www.kent.gov.uk/ltp5.
- 7.2 Following the consultation, all responses will be analysed and considered as the final plan is developed for the County Council, who will vote on whether to adopt it. The aim is that this will take place later in 2024.

8. Contact officers

The following contact officers can be contacted on 03000 418181

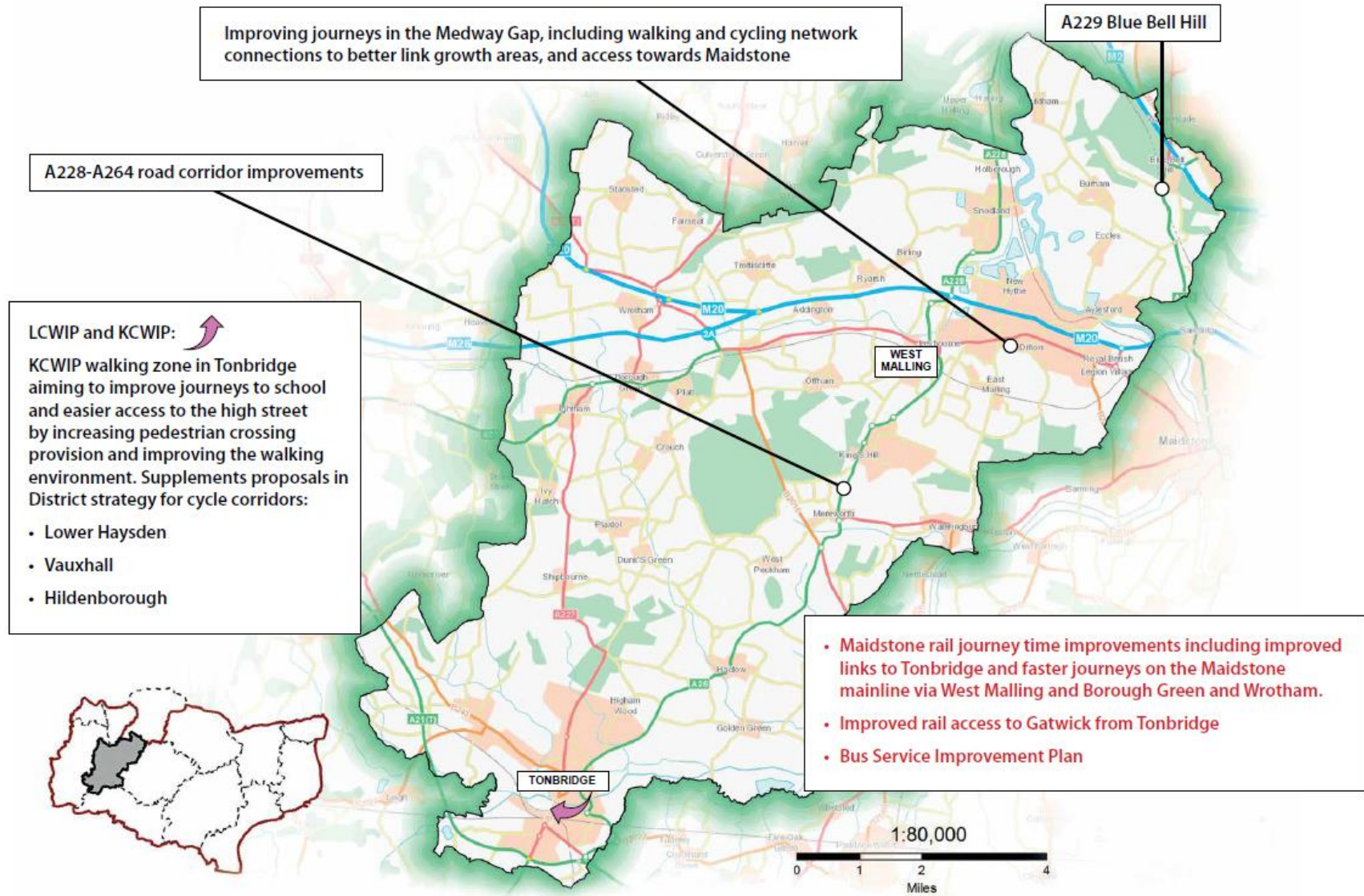
Joseph Ratcliffe
Mark Welch

Transport Strategy Manager
Principal Transport Planner

Annex 1 - Balance of strategic network-wide proposals across the transport mix

Strategic road network	Local road network	Public transport network	Walking and cycling network
<p>Lower Thames Crossing M2 Junction 1 capacity A282 (M25) Junction 1A capacity M2 Junction 4 capacity and local development connections M2 road capacity enhancement M2 Junction 7 (Brenley Corner) capacity enhancement South Canterbury A2 junction access enhancements A2 Dover Access / Duke of York and Whitfield improvements International haulage traffic management M25-M26-A21 East-facing slips A21 Kipping's Cross enhancements Trunking: A229 and A249 between M2 and M20</p>	<p>Maintaining the road network Road Safety Vision Zero A229 Blue Bell Hill North Thanet Link Alkham Valley Spitfire Way junction improvements Sandwich bypass improvements A2 Gravesend Local Junctions A228-A264 corridor improvements – West Malling to Tunbridge Wells Development Management principles Supporting the shift to electric vehicles through new charging points</p>	<p>Freight gauge enhancement for international traffic Maidstone mainline journey time improvements Gatwick access improvements Dover / Folkestone High Speed journey time improvements International rail passenger services for Kent Sturry and Canterbury West corridor improvements Local rail services Bus Service Improvement Plan (county-wide) Thameside Fastrack network growth Dover Fastrack network growth Mobility as a Service Cycle Hire trials Shared transport hubs (Mobility Hubs) Elizabeth line extension to Ebbsfleet Opposition to Gatwick expansion</p>	<p>Public Rights of Way Improvements</p> <p>Kent Cycling and Walking Infrastructure Plan, including:</p> <p>15 initial route corridors for focusing improvements on cycling 15 initial walking zones for focusing improvements on walking and wheeling</p> <p>...helping to deliver improvements on corridors that are also beneficial for district aspirations.</p>

Annex 2 – Tonbridge and Malling’s borough-specific proposals



To: Tonbridge and Malling Joint Transportation Board
By: KCC Highways and Transportation
Date: 16th September 2024
Subject: Highways Forward Works Programme: 2024/25 and 2025/26
Classification: Information Only

Summary: This report updates Members on the identified schemes approved for construction

1. Introduction

This report provides an update and summarises schemes that have been programmed for delivery in 2024/25 and 2025/26.

In summer 2021 Kent County Council published a Highways Asset Management Plan (HAMP), which included, as Appendix C, a five-year Forward Works Programme for the years 2021/22 to 2025/26. This reflected the need to move away from annual programmes and to consider asset management activity a multi-year one.

The first part of the programme concerned the two years 2021/22 - 2022/23. In October 2022 we replaced this with a programme covering the years 2022/23 - 2023/24, and we have now produced a new two-year programme covering the years 2024-25 – 2025-26. As before, most of the sites included in this programme have already been verified by our engineers.

The second part of our programme related to years three to five of our five-year programme (2023/24 - 2025/26). This too is in need of revision to cover the years 2026/27 - 2028-29 and the work required to do this is currently in progress. As before, our new years three to five programme will be largely based on data from our asset management systems, so may be subject to more changes as the schemes are verified.

This programme is subject to regular review and may change for a number of reasons including budget allocation, contract rate changes, inflationary pressures such as material price increases, conflicting works, and to reflect our changing priorities. The programme and extent of individual sites within the programme may also be revised following engineering assessment during the design phase, and additional sites may be added or others advanced if their condition deteriorates rapidly so that we need to react in order to keep the highway in a safe and serviceable condition.

Further information about how we manage our highway infrastructure, including our county-wide five-year forward works programme, may be found on our website:

<https://www.kent.gov.uk/about-the-council/strategies-and-policies/transport-and-highways-policies/managing-highway-infrastructure>

In addition to planned maintenance of our highway assets, this report includes transportation and safety schemes, developer funded works, Combined Members Grant schemes, and planned maintenance of public rights of way.

Road, Footway & Cycleway Renewal and Preservation Schemes – see Appendix A

Drainage Repairs & Improvements – see Appendix B

Street Lighting – see Appendix C

Transportation and Safety Schemes – see Appendix D

- **Casualty Reduction Measures**
- **Externally Funded Schemes**
- **Major Capital Programme**

Developer Funded Works – see Appendix E

Bridge Works – see Appendix F

Traffic Systems – see Appendix G

Combined Members Grant – Member Highway Fund – see Appendix H

Road Markings – see Appendix I

Conclusion

1. This report is for Members' information.

Contact Officers:

The following contact officers can be contacted on **03000 418181**

Kevin Gore	Senior Highway Manager West Kent
Andy Watson	Tonbridge and Malling Highway Manager
Alan Casson	Strategic Asset Manager
Earl Bourner	Drainage Asset Manager
Helen Rowe	Structures Asset Manager
Sue Kinsella	Street Light Asset Manager
Toby Butler	Traffic Operations and Technology Manager
Jamie Hare	Development Agreements Manager
Nikola Floodgate	Road Safety and Active Travel Group Manager
Lee Burchill	Major Capital Programme Manager
Jonathan Dean	Highway Manager Special Projects/HSR/Signs & Lines

Appendix A – Road, Footway and Cycleway Renewal and Preservation Scheme

The delivery of these schemes is weather dependent; should it prove not possible to carry out these works on the planned dates, new dates will be arranged and the residents will be informed by a letter drop to their homes.

Surface Treatments - Contact Officer Aaron Divall			
<i>Micro Surfacing</i>			
Road Name	Parish	Extent of Works	Current Status
Pembury Road	Tonbridge	Quarry Hill Road to Woodgate Way	Completed Apr/May 2024
Chapman Way	East Malling	Winterfield Lane to New Road	Completed June 2024
Quarry Hill Road	Borough Green	From A25 to Dark Hill Road	Completed June 2024
Queens Road (inc Avenue)	Snodland	Whole Roads	Completed June 2024
<i>Surface Dressing</i>			
Road Name	Parish	Extent of Works	Current Status
Seven Mile Lane	Mereworth	A20 to A26	Completed August 2024
London Road	Addington	Sandy Lane to Seven Mile Lane & Ashton Way to West Malling Roundabout	Completed July 2024
London Road	Wrotham	M20 Roundabout to Ash Lane	Completed July 2024
Tonbridge Road	Ightham	Ismays Road to High Cross Road	Completed July 2024
<i>Retread</i>			
Road Name	Parish	Extent of Works	Current Status
Beech Road	Mereworth	Seven Mile Lane to Butchers Lane	Completed May 2024
Willow Wents	Mereworth	From Barons Place to Highland Cottages, excluding junction with Horns Lane to W access of Highlands	Completed June 2024
<i>Forward Works – Treatment type and priority to be confirmed following site assessments</i>			
Clare Lane	East Malling And Larkfield	From Winterfield Lane to Mill Lane	Currently proposed for financial year 2025/26
Holborough Road	Snodland	A228 To Constitution Hill	Currently proposed for financial year 2025/26

Maidstone Road	Platt	Crouch Lane to Grange Road	Currently proposed for financial year 2025/26
Red Hill	Wateringbury	30mph (Wateringbury End) to North Pole Road	Currently proposed for financial year 2025/26
Rochester Road	Wouldham	All Saints Church to County Boundary	Currently proposed for financial year 2025/26
Shipbourne Road	Tonbridge	The Ridgeway to Yardley Park Road	Currently proposed for financial year 2025/26
Teston Road	West Malling	Offham to Leonards Street	Currently proposed for financial year 2025/26
Wateringbury Road	East Malling And Larkfield	Sweets Lane to North Pole Road	Currently proposed for financial year 2025/26
Machine Resurfacing – Contact Officer Mr Byron Lovell			
Road Name	Parish	Extent of Works	Current Status
A26 Tonbridge Road	Wateringbury	Approaches to Wateringbury Crossroads	Completed
A228 Snodland Bypass	Snodland	Between Ham Hill roundabout and Holborough roundabout	Completed
A20 Wrotham Heath Roundabout	Wrotham	<u>Retexturing</u> North Western quadrant of roundabout	Completed
B245 Tonbridge Road	Hildenborough	Foxbush to Orchard Lea	Completed
A227 Gravesend Road	Wrotham	Harvel Road to the A20 London Road	Currently proposed for financial year 2025/26
Lunsford Lane	Larkfield	London Road to Gighill Road	Currently proposed for financial year 2025/26
Station Road	Aylesford	Forstal Road to Hall Road	Currently proposed for financial year 2025/26
Footway Improvements – Contact Officer Mr Neil Tree			
Turner Road	Tonbridge	<u>Footway Reconstruction</u> Entire extent .	Completed
Stafford Road	Tonbridge	<u>Footway Protection</u> From the junction with The Slade to Hawden Road	Completed

The Slade	Tonbridge	<u>Footway Protection</u> From the junction with Stafford Road to the car park	Completed
Tonbridge Road	Tonbridge	<u>Footway Protection</u> Southern footway between Noble Tree Road and Weald Court	Completed
Noble Tree Road	Tonbridge	<u>Footway Protection</u> Full length - From Tonbridge Road - Watts Cross Road	Completed
Pout Road	Tonbridge	<u>Footway Protection</u> Full Extents	Completed
Baltic Road	Tonbridge	<u>Footway Protection</u> Exact extents to be ascertained at design stage	Currently proposed for financial year 2025/26
Church Lane	Trottiscliffe	<u>Footway Protection</u> Exact extents to be ascertained at design stage	Currently proposed for financial year 2025/26
Deakin Leas	Tonbridge	<u>Footway Protection</u> Exact extents to be ascertained at design stage	Currently proposed for financial year 2025/26
Goldsmid Road	Tonbridge	<u>Footway Protection</u> Exact extents to be ascertained at design stage	Currently proposed for financial year 2025/26
St Marys Road	Tonbridge	<u>Footway Protection</u> Exact extents to be ascertained at design stage	Currently proposed for financial year 2025/26
The Drive	Tonbridge	<u>Footway Protection</u> Exact extents to be ascertained at design stage	Currently proposed for financial year 2025/26
Tonbridge Road	East Peckham	<u>Footway Protection</u> Exact extents to be ascertained at design stage	Currently proposed for financial year 2025/26
Weald View Road	Tonbridge	<u>Footway Protection</u> Exact extents to be ascertained at design stage	Currently proposed for financial year 2025/26

Appendix B - Drainage

Drainage Repairs & Improvements - Contact Officer Earl Bourner			
Road Name	Parish / Town	Description of Works	Current Status
London Road	Larkfield	Investigation and renovation of existing soakaways opposite B&Q to remedy flooding on New Road junction	Job passed to contractor for investigative works in new soakaway liners. If successful, intend to deliver works in the same operation. Awaiting final quotation and programming, meetings taking place with contractors w/e 23/08
Spring Lane	Ightham	Flooding issues affecting road and adjacent property. Drainage scheme to be implemented to remedy flooding issues.	Works commenced 29 th July 2024
Roughway Lane	Roughway	Civils crew required to open excavation and install a Precast concrete / uPVC trapped gully, 750mm deep to invert as KCC/HTW/500/009, including grating and frame (450x450mm grating x 150mm high) and reconnect any existing sections of pipework back up to new gully. There is a natural spring which runs through the drainage system here but is currently running down the edge of the carriageway, sandbags maybe required to divert water around works.	Works Completed
Long Mill Lane	Platt	Crew required to dredge pond and dispose of any waste taken out, pond is approx 12m long and 5m wide, remove only the visible silt necessary which is approx 200mm to 500mm in depth.	Works Completed
Priory Grove	Ditton	Civils crew required to locate and uncover hidden manhole. Unsure if manhole has a cover and frame, if this doesn't, install manhole cover and frame D400, 600 x 600mm opening 150 deep.	Job Passed to Contractor

River Lawn Road	Tonbridge	Civils crew required to dig down next to gully to locate pipework, remove swan neck and replace with a straight connection onto gully using 150mm uPVC drain on bed type z to KCC/HTW/500/051, average depth to invert not exceeding 1.0m. Crew also required to install 6m of 150mm uPVC drain on bed type z to KCC/HTW/500/051, average depth to invert not exceeding 1.0m from gully outfalling onto mainline.	Works Completed
St Leonards Street	West Malling	Civils crew required to dig down and replace 6.5m of defective pipework between gully outside No.130 outfalling to gully opposite No.130 with 150mm uPVC drain on bed type z to KCC/HTW/500/051, average depth to invert not exceeding 1.0m.	Works Completed
Conyerd Road	Borough Green	Civils crew required to dig down and replace first 2m of defective pipework from gully outside No.2.	Job Passed to Contractor Programmed to commence on 09/09/2024 for 3 Days.
Pembury Road	Tonbridge	Civils crew required to dig down and replace first 2.5m of defective pipework from gully outside No.97. Replace section of pipework with 225mm uPVC drain on bed type z to KCC/HTW/500/051, average depth to invert not exceeding 1.0m. Unsure extent of defective pipework until excavation is open, fix where required. Crew also required to excavate and remove damaged brick-built gully outside No.97 and replace with new brick gully as per standard drawing KCC-HTW-500-011 (Untrapped) Re-connect all existing connections to the gully and replace the gully cover and frame with D400 450x450mm grating x 150mm high.	Job Passed to Contractor

Appendix C – Street Lighting

Structural testing of KCC owned streetlights has identified the following as requiring replacement. A status of complete identifies that the column replacement has been carried out. Programme dates are identified for those still requiring replacement.

Street Lighting Column Replacement – Contact Officer Sue Kinsella			
Road Name	Location	Description of Works	Current Status
Kits Coty Slip Road JCBD009	Bluebell Hill	Replacement of Lamp Column	Completed
Lunsford Lane JLDD032	Larkfield	Replacement of Lamp Column M20 motorway closure required	Completion by end December 2024
Wrotham Road JWCP013	Wrotham	Replacement of Lamp Column. Brick wall built around old column. UKPN refused to carry out any works as no access to electric supply. Wall will need partial removal which will need to be agreed with homeowner. A new column has been installed on the opposite side of the road.	Completion TBA.
Western Road JWBA004	Borough Green	Replacement of Lamp Column	Completion by end December 2024
London Road JUAQ024	Wrotham	Replacement of Lamp Column	Completion by end December 2024
Waveney Road JWAR004	Tonbridge	Replacement of Lamp Column	Completion by end December 2024
Rochester Road JRBO001	Burham	Replacement of Lamp Column	Completed
Shipbourne Road JSBO029	Tonbridge	Replacement of Lamp Column	Completion by end December 2024
Shipbourne Road JSBO078	Tonbridge	Replacement of Lamp Column	Completion by end December 2024
Wrotham Road JWCP012	Borough Green	Replacement of Lamp Column	Completion by end December 2024
Sevenoaks Road JBCJ002	Borough Green	Replacement of Lamp Column	Completion by end December 2024
Sevenoaks Road JBCJ004	Borough Green	Replacement of Lamp Column	Completed
Sevenoaks Road JBCJ013	Borough Green	Replacement of Lamp Column	Completion by end December 2024
Borough Green Road JBCK009	Borough Green	Replacement of Lamp Column	Completion by end December 2024

Black Horse Mews JBFQ006	Borough Green	Replacement of Lamp Column	Completed
The Ridgeway JTBW023	Tonbridge	Replacement of Lamp Column	Completed
The Ridgeway JTBW009	Tonbridge	Replacement of Lamp Column	Completed
Tilebarn Corner JTFW005	Tonbridge	Replacement of Lamp Column	Completion by end December 2024
Quarry Hill Road JQAC003	Borough Green	Replacement of Lamp Column	Completion by end December 2024
Quarry Hill Road JQAC004	Borough Green	Replacement of Lamp Column	Completion by end December 2024
Hawden Close JHBA005	Tonbridge	Replacement of Lamp Column	Completed
Forest Grove JFBD003	Tonbridge	Replacement of Lamp Column	Completed
Avon Close JABG002	Tonbridge	Replacement of Lamp Column	Completion by end December 2024
Quarry Hill Road JQAK018	Tonbridge	Replacement of Lamp Column	Completion by end December 2024
Cheviot Close JCBM003	Tonbridge	Replacement of Lamp Column	Completion by end December 2024
Fernleigh Rise JFAS006	Ditton	Replacement of Lamp Column	Completion by end December 2024
Fernleigh Rise JFAS009	Ditton	Replacement of Lamp Column	Completion by end December 2024
Primrose Drive JPCM015	Ditton	Replacement of Lamp Column	Completion by end December 2024
Burns Crescent JBDZ002	Tonbridge	Replacement of Lamp Column	Completion by end December 2024
Burns Crescent JBDZ005	Tonbridge	Replacement of Lamp Column	Completion by end December 2024
Burns Crescent JBDZ006	Tonbridge	Replacement of Lamp Column	Completion by end December 2024
Burns Crescent JBDZ007	Tonbridge	Replacement of Lamp Column	Completion by end December 2024
Burns Crescent JBDZ008	Tonbridge	Replacement of Lamp Column	Completion by end December 2024
Masefield Way JMFB004	Tonbridge	Replacement of Lamp Column	Completion by end December 2024
Masefield Way JMFB005	Tonbridge	Replacement of Lamp Column	Completion by end December 2024

Masefield Way JMBF007	Tonbridge	Replacement of Lamp Column	Completion by end December 2024
Stacey Road JSCW010	Tonbridge	Replacement of Lamp Column	Completion by end December 2024
Stacey Road JSCW013	Tonbridge	Replacement of Lamp Column	Completion by end December 2024
Shelton Close JSBK001	Tonbridge	Replacement of Lamp Column	Completion by end December 2024
Shelton Close JSBK007	Tonbridge	Replacement of Lamp Column	Completion by end December 2024
Welland Road JWAV010	Tonbridge	Replacement of Lamp Column	Completion by end December 2024
Marston Walk JLBB003	Walderslade	Replacement of Lamp Column	Completion by end December 2024
Sandown Road JSAE002	West Malling	Replacement of Lamp Column	Completion by end December 2024
Pembury Road JPAT028	Tonbridge	Replacement of Lamp Column	Completion by end December 2024
Chaucer Gardens JCBF004	Tonbridge	Replacement of Lamp Column	Completion by end December 2024
Chaucer Gardens JCBF005	Tonbridge	Replacement of Lamp Column	Completion by end December 2024
Beddow Way JBAS008	Aylesford	Replacement of Lamp Column	Completion by end December 2024
Merlin Avenue JMBX001	Leybourne	Replacement of Lamp Column	Completion by end December 2024
London Road JLCA009	Ditton	Replacement of Lamp Column	Completion by end December 2024
London Road JLCA020	Ditton	Replacement of Lamp Column	Completion by end December 2024
Chaucer Way JCBG018	Lunsford	Replacement of Lamp Column	Completion by end December 2024
Lockside JLDY002	Tonbridge	Replacement of Lamp Column	Completion by end December 2024
Danvers Road JDAB002	Tonbridge	Replacement of Lamp Column	Completion by end December 2024

Appendix D – Transportation and Safety Schemes

Casualty Reduction Measures

The Schemes Planning & Delivery team is implementing schemes within Tonbridge and Malling Borough, in order to meet Kent County Council's strategic targets (for example, addressing traffic congestion or improving road safety). Casualty reduction measures have been identified to address a known history of personal injury crashes. Current status correct as of 08.08.2024

Local Transport Plan Funded Schemes – Contact Officer: Christopher Koningen		
Road Name	Description of Works	Current Status
Casualty reduction measures (reactive) – Tonbridge and Malling		
A20 London Road, J/W Hall Road Ditton	Signing and lining improvements	Ordered Q4 2024
A228 Branbridges Ind Est Rndbt JW Hale Street	Signing and lining improvements	Complete
A228 Maidstone Road JW B2015 Maidstone Road, East Peckham	Refurbishment of roundabout block paving	Complete
LTP Schemes – Tonbridge and Malling		
A26 Tonbridge Road, Hadlow - Shared footway / cycleway	Phase 1 - Shared footway / cycleway between Three Elm Lane and Haywards Farm shop.	Design

Externally Funded Schemes

The Schemes Planning & Delivery team is implementing schemes within **Tonbridge and Malling Borough** funded by external corporations whilst still meeting Kent County Council's strategic targets with the road network.

Externally Funded Schemes – Contact Officer: Christopher Koningen		
Road Name	Description of Works	Current Status
East Street / High Street, Tonbridge - Junction improvements and footway realignment	Design only - Drivers of larger vehicles struggle to make the left turn out of East Street which results in over running of the footway. Potential junction realignment to provide a greater area for turning	Design

Major Capital Programme

The Major Capital Programme team is implementing schemes within **Tonbridge and Malling borough** in line with Kent County Council's strategic targets with the road network.

Externally Funded Schemes – Contact Officer: Barry Stiff			
Road Name	Description of Works	Source of Funding	Current Status
A229 Blue Bell Hill M2 and M20 Interchange Upgrades	Major Junction upgrade scheme	Large Local Majors	No update from last JTB.
Coldharbour Roundabout Scheme	Major Junction Upgrade Scheme	Local Growth Fund	Construction commenced in February 2024, Works have progressed as anticipated and are currently on programme. The new larger roundabout has largely been constructed with traffic now running around the revised alignment, overnight road closures for surfacing works were completed in late July, ahead of schedule. Drainage, kerbing and footway construction in offline sections to the east and south of the roundabout are currently being worked on. Final surfacing works planned for October. Project is still on target to complete in December 2024.
A20 London Road / Hall Road, Aylesford	Junction Improvement	Local Growth Fund	Design being reviewed. Any works will not take place until Coldharbour Roundabout has completed.
Paddock Wood Junction Improvement Scheme	Junction Improvement	Developer Funded	Separate paper submitted as a written update only.

Appendix E – Developer Funded Works

Developer Funded Works (Section 278 Agreement Works) – Contact Officer: Natalie Peach (unless specified otherwise)				
Scheme Name	Mastergov File Ref No	Parish	Description of Works	Current Status
Retirement Village, rear of 239-259 London Road, West Malling	TO004059	West Malling	New priority junction access	Technical Acceptance Issued
Barfield House, Teston Road, Offham	TO004058	Offham	New priority junction access, footway link and uncontrolled crossing point	Undergoing technical review
2nd Access for Police, Poppyfields Roundabout, Aylesford.	TO004054	Aylesford	2nd Access to Police Station from link road created by BDW.	Contact Officer: Sarah Parris Works still to complete to accommodate changes for Police applying for another access for them.
King Hill (Orwell Spike), West Malling	TO004052	West Malling	New bellmouth Access	Works underway. Contact Officer: Jamie Hare
Hermitage Lane access adj Chapelfield Way	TO004051	Aylesford	Access to be created for further	Undergoing Technical Review Contact Officer: Sarah Parris
A20 London Road junction Hermitage Lane	TO004050	Aylesford	Junction improvement works required for pre-occupation for development Land South of Barming Station.	Undergoing technical review Contact Officer: Sarah Parris
New Court Road – Access to development site at Bell Lane Burham	TO004048	Burham	Bellmouth Access	Technical Acceptance Issued – Awaiting completion of Agreement and update from Developer. No action since last update. Contact Officer: Alan Aston
New Road – j/w A20 London Road, East Malling	TO004047	East Malling	Junction improvement required by planning consent	On Maintenance
River Walk and New Wharf Road, rear of 78-80 High Street, Tonbridge	TO004041	Tonbridge	Access to retirement living apartments	Awaiting full submission
Coldharbour Lane, Aylesford	TO004039	Aylesford	Realignment/widening of access road north of Aylesford interchange and change of priority for access to industrial site	Highway works completed, works in Maintenance Contact Officer: Claremarie Vine
A20 London Road West Malling, Land west of Winterfield Lane	TO004038	West Malling	New access to development, footway works and changes to signalised junction at winterfield Lane	Works in progress

Lower Haysden Lane, Tonbridge	TO004037	Tonbridge	Amended junction layout at Lower Haysden Lane/Brook Street to incorporate development access	Works substantially completed
Access Adj, Barming Station, Hermitage Lane	TO004034	Aylesford	New access and footway/cycleway works	Works complete until development moved on then traffic island and TRO to complete. Contact Officer: Sarah Parris
Aylesford Newsprint – New Hythe Lane	TO004033	East Malling & Larkfield	Bus stop and pedestrian crossing installation	Works substantially completed
Aylesford Newsprint – Papyrus Way/New Hythe Lane	TO004032	East Malling & Larkfield	Footway Improvements	Works substantially completed
Aylesford Newsprint – Bellingham Way	TO004031	Aylesford	Off-site works – pedestrian crossing	Works substantially completed
Tonbridge Retail Park Access	TO004029	Tonbridge	Access capacity improvements	On Maintenance
A20 London Road/New Road/Station Road, Ditton	TO004028	Ditton	A20 improvement Scheme	Technical Acceptance issued – Awaiting completed agreement
Kiln Barn Road, Ditton	TO004027	Ditton	New bellmouth access and footway provision with associated lighting, drainage and speed limit works	Agreement completed – Awaiting start of works
Hermitage Lane Roundabout	TO004020	Aylesford	Roundabout for development on Hermitage Lane junction with Whitepost.	Undergoing technical review Contact Officer: Sarah Parris
Poppyfields Roundabout	TO004019	Aylesford	New roundabout for development on Hermitage Lane and re-alignment of roundabout at 20/20 roundabout with Poppyfields	Works complete, snagging works to be completed. Contact Officer: Sarah Parris
Laker Road, Rochester	TO004018	Rochester	New Bellmouth Access	Works completed Contact Officer: Jamie Hare
Oakhill House, 130 Tonbridge Road, Hildenborough	TO004016	Hildenborough	Emergency access crossover with associated footway/cycleway amendments and signage	On Maintenance
Aylesford Newsprint Site, Bellingham Way	TO004014	Larkfield	Removal of roundabout and formation of staggered junction to tie in to new private link road	Works substantially completed – awaiting remedials
Aylesford Newsprint Site, Station Road, Aylesford	TO004013	Aylesford	Junction signalisation for new link road	Works substantially completed – awaiting remedials
Land East of Clare Park, New Road, East Malling	TO004010	East Malling	New bellmouth access	Works substantially completed – awaiting remedials

Nepicar Oast, A20 London Road, Wrotham	TO004008	Wrotham	New Bellmouth Access	Agreement Signed
The Old Coal Yard, Leybourne Way/New Hythe Lane, Larkfield	TO004007	Larkfield	New bellmouth access and footway link	Works substantially completed – awaiting remedials
Land fronting Vale Rise and Vale Road	TO004006	Tonbridge	New access to industrial site and closing of existing access	On Maintenance
Oakdene Trade Park, London Road, Wrotham	TO004003	Wrotham	Access to Trade Park	Default notice issued to Developer due to non-completion of works
Co-Op Store, Holborough Road/High Street, Snodland	TO004002	Snodland	Vehicle crossover to car park, loading bay and bus stop amendments	Awaiting completion of works
Sportsmans Farm, King Hill, West Malling	TO003427	West Malling	Access to residential development	Works substantially completed – awaiting remedials
Vantage Point	TO003314	Snodland	Access to proposed warehouse and drive-thru units from A228 Holborough Road	Awaiting remedial works prior to formal adoption
Hazen Road	TO003181	Kings Hill	Alteration of existing turning facility to form new access to assisted living development	On Maintenance
Station Road, Aylesford Phase 1	TO003161	Aylesford	New bellmouth access	Awaiting remedial works prior to formal adoption
Peters Village – Keepers Cottage Lane and Worrall Drive	TO003147	Wouldham	LoA for short term construction vehicle access, long term crossovers	On maintenance
Sheldon Way, Larkfield	TO003116	Larkfield & Aylesford	Vehicle crossover access and footway resurfacing	Works substantially complete – awaiting remedials
Woodgate Way/Tudeley Lane, Tonbridge	TO003113	Tonbridge	Two new accesses to car showroom	Awaiting H&S file
Cannon Lane Tonbridge	TO003089	Tonbridge	Alteration of entrance to new McDonald site	Awaiting confirmation of S104
Snodland Railway Station Forecourt	TO003079	Snodland	Layout Improvement	Awaiting remedials
Hermitage Lane/London Road, Aylesford	TO003068	Aylesford	New signal controlled junction	Works complete
Mercedes Site Vale Road Tonbridge	TO003050	Tonbridge	New Entrance and seal off old entrance	On maintenance
Quarry Hill Road, Borough Green	TO003034	Borough Green	Splitter island and footway improvements at roundabout	Awaiting completion of works prior to formal adoption
Carnation Close	TO003024	East Malling	Alteration of turning head and creation of parking bays	Awaiting as built plans and commuted sums
The Pinnacles, Darenth Avenue	TO003021	Tonbridge	Creation of bellmouth	On maintenance

Appendix F – Bridge Works

Currently, there is no work planned in the Tonbridge and Malling district.

Appendix G – Traffic Systems

There is a programme of scheduled maintenance to refurbish life expired traffic signal equipment across the county based upon age and fault history. The delivery of these schemes is dependent upon school terms and holiday periods; local residents, businesses and schools will be informed verbally and by a letter drop of the exact dates when known.

Traffic Systems - Contact Officer: Toby Butler		
Location	Description of Works	Current Status
A227 High Street near Bordyke, Tonbridge (10-0289)	Refurbish existing traffic signal-controlled crossing and convert to near-sided pedestrian facilities	Programmed for August 2024

Appendix H - Combined Members Grant programme update

Member Highway Fund programme update for the Tonbridge and Malling Borough.

The following schemes are those, which have been approved for funding by both the relevant Member and by Haroona Chughtai, Director of Highways and Transportation. The list only includes schemes, which are

- in design
- at consultation stage
- about to be programmed
- recently completed on site.

The list is up to date as of 08.08.2024

The details given below are for highway projects only. This report does not detail

- contributions Members have made to other groups such as parish councils
- highway studies
- traffic/ non-motorised user surveys funded by Members.

More information on the schemes listed below can be found by contacting the Highway Manager for the Tonbridge and Malling Borough / Andy Watson.

[Sarah Hudson]

Details of Scheme	Status
Addlestead Road, East Peckham ANPR Camera Survey	Complete Q1 2024

[Trudy Dean]

Details of Scheme	Status
West Malling 20mph Speed Limit – Awaiting County member confirmation of funding.	Design TBC

Appendix I – Road Markings

This year will see the commencement of a multi-year strategic lining programme for the renewal of road markings, focusing initially on the Resilient Highway Network and A road network, with a view to expanding this to the B road network in time (dependent on funding).

A five-year programme has been developed, and will be reviewed and sense checked annually, with input from local district teams to ensure this programme remains sensitive to local requirements.

The delivery of these schemes is weather dependent; should it prove not possible to carry out these works on the planned dates, new dates will be arranged.

Road Marking Renewal Programme – <i>Contact Officer: Jonathan Dean</i>			
Road Name	Parish/Town	Extent of Works	Current Status
London Road	Wrotham	Seven Mile Lane to Nepicar Lane	To be programmed
Cannon Lane	Tonbridge	B2017 Tudeley Road to Three Elm Lane	September 2024

Legal Implications

1.1.1 Not applicable.

1.2 Financial and Value for Money Considerations

1.2.1 Not applicable.

1.3 Risk Assessment

1.3.1 Not applicable.

Contacts: Kevin Gore / Andy Watson 03000 418181

Agenda Item 10

Any other items which the Chairman decides are urgent due to special circumstances and of which notice has been given to the Chief Executive.

This page is intentionally left blank

Agenda Item 11

The Chairman to move that the press and public be excluded from the remainder of the meeting during consideration of any items the publication of which would disclose exempt information.

**ANY REPORTS APPEARING AFTER THIS PAGE CONTAIN EXEMPT
INFORMATION**

This page is intentionally left blank